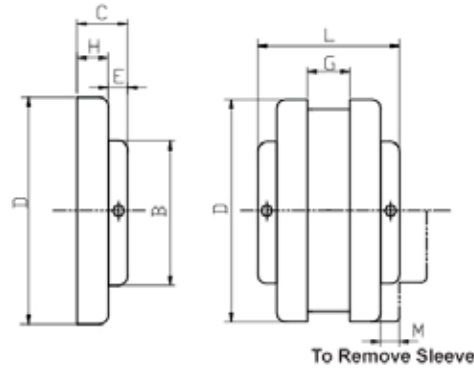


MD Flex Couplings Type J



Flange Size	Dimensions (Inches)								Set Screw Thread Size	Set Screw Qty.	Wt. (lbs.)
	D	C	E	G	B	L	H	M			
3J	2.063	13/16	7/16	3/8	1 1/2	2	3/8	9/16	1/4-20 UNC X 1/4"	2	0.3
4J	2.461	7/8	7/16	5/8	1 5/8	2 3/8	7/16	3/4	1/4-20 UNC X 1/4"	2	0.4
5J	3.252	1 1/16	15/32	3/4	1 7/8	2 7/8	19/32	31/32	1/4-20 UNC X 1/4"	2	0.9
6J	4.000	1 7/32	19/32	7/8	1 15/16	3 5/16	5/8	1 3/32	5/16-18 UNC X 1/4"	2	1.2

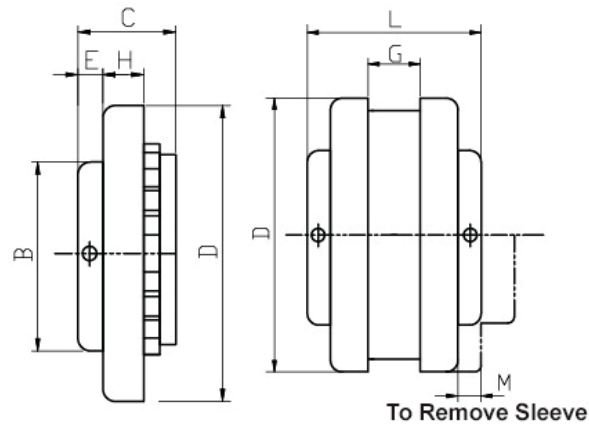
Flange Size	Bore Range-inch	Keyseat-inch
3J	3/8	No Key
	1/2	1/8 x 1/16
	5/8, 3/4, 7/8	3/16 x 3/32
4J	1/2	1/8 x 1/16
	5/8, 3/4, 7/8	3/16 x 3/32
	15/16, 1	1/4 x 1/8
5J	1/2	1/8 x 1/16
	5/8, 3/4, 7/8	3/16 x 3/32
	15/16, 1, 1 1/8	1/4 x 1/8
6J	5/8, 3/4, 7/8	3/16 x 3/32
	15/16, 1, 1 1/8, 1 3/16, 1 1/4	1/4 x 1/8
	1 3/8	5/16 x 5/32

Flange Size	Bore Range-mm	Keyseat-mm
3J	11, 12	No Key
	14, 15, 16	5 x 2.3
	19	6 x 2.8
4J	14, 15, 16	5 x 2.3
	19, 20	6 x 2.8
	24, 25	8 x 3.3

Material: 3J-5J Powdered Metal, 6J Cast Iron

We do not recommend reboring the 3J & 4J flanges.

MD Flex Couplings Type S



Flange Size	Type	Dimensions (Inches)								Set Screw Thread Size	Set Screw Qty.	Wt. (lbs.)
		D	C	E	G	B	L	H	M			
5S	-	3.252	1 11/32	29/64	3/4	1 7/8	2 27/32	19/32	31/32	5/16-18 UNC X 1/4"	2	1.1
6S	1	4.000	1 5/8	9/16	7/8	2 1/2	3 9/16	25/32	1 3/32	5/16-18 UNC X 1/4"	2	1.9
	2	4.000	1 5/16	9/16	7/8	2 1/2	3 9/16	25/32	1 3/32	5/16-18 UNC X 1/4"	2	1.8
	3	4.000	1 9/16	25/32	7/8	2 13/16	4 1/16	25/32	1 3/32	5/16-18 UNC X 1/4"	2	1.8
7S	-	4.625	1 27/32	11/16	1	2 13/16	3 15/16	25/32	1 5/16	5/16-18 UNC X 1/4"	2	2.6
8S	1	5.449	2 3/32	3/4	1 1/8	3 1/4	4 7/16	29/32	1 1/2	3/8-16 UNC X 3/8"	2	4.4
	2	5.449	1 15/16	1 1/32	1 1/8	3 1/4	5	29/32	1 1/2	3/8-16 UNC X 3/8"	2	3.7
9S	1	6.350	2 13/32	25/32	1 7/16	3 5/8	5 1/16	1 1/32	1 3/4	3/8-16 UNC X 3/8"	2	6.8
	2	6.350	2 9/32	1 1/4	1 7/16	4 1/8	6	1 1/32	1 3/4	3/8-16 UNC X 3/8"	2	6.2
10S	-	7.500	2 23/32	13/16	1 5/8	4 3/8	5 11/16	1 7/32	2	3/8-16 UNC X 3/8"	2	10.5
11S	1	8.625	3 7/16	1 1/8	1 7/8	5 1/4	7 1/8	1 1/2	2 3/8	3/8-16 UNC X 3/8"	2	16.6
	2	8.625	3 1/16	1 9/16	1 7/8	5 5/8	8	1 1/2	2 3/8	3/8-16 UNC X 3/8"	2	16.4
12S	-	10.000	4	1 9/32	2 5/16	5 3/4	8 1/4	1 11/16	2 11/16	3/8-16 UNC X 3/8"	2	26.6
13S	-	11.750	4 3/8	1 5/16	2 11/16	6 3/4	9 1/4	1 31/32	3 1/16	1/2-13 UNC X 1/2"	2	45.2
14S	-	13.875	4 1/2	1 1/16	3 1/4	7 1/2	9 7/8	2 1/4	3 1/2	1/2-13 UNC X 1/2"	2	69.1

Material: 5S Powdered Metal, 6S-14S Cast Iron

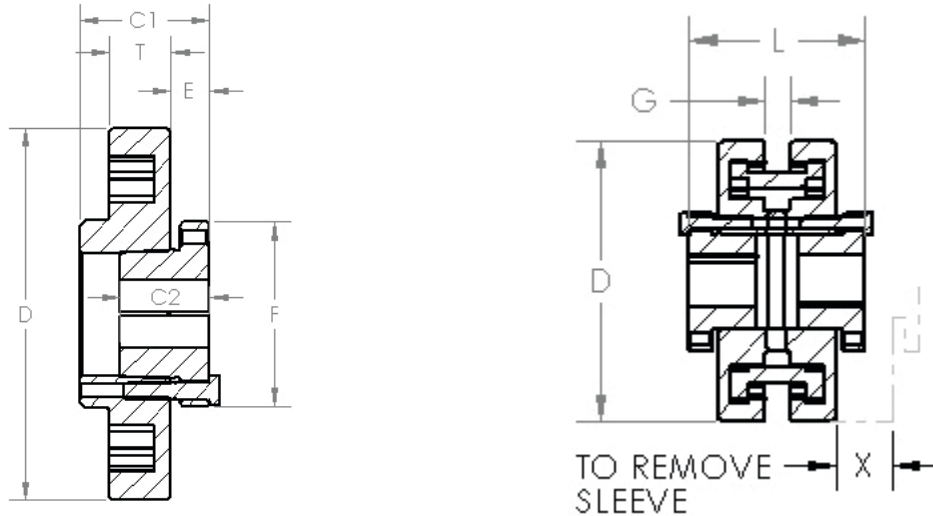
Flange Size	Bore Range-inch	Keyseat-inch
5S	5/8, 3/4, 13/16, 7/8	3/16 x 3/32
	15/16, 1, 1 1/16, 1 1/8, 1 3/16	1/4 x 1/8
	1 1/4	1/4 x 1/16*
6S	3/4, 7/8	3/16 x 3/32
	15/16, 1, 1 1/16, 1 1/8, 1 3/16, 1 1/4 (Type 1)	1/4 x 1/8
	1 5/16, 1 3/8 (Type 1)	5/16 x 5/32
	1 7/16 (Type 1)	3/8 x 3/16
	1 1/2 (Type 1)	3/8 x 1/8*
	1 5/8 (Type 2)	3/8 x 1/8*
	1 3/4 (Type 2)	3/8 x 1/16*
1 7/8 (Type 3)	1/2 x 1/16*	
7S	3/4, 7/8	3/16 x 3/32
	15/16, 1, 1 1/16, 1 1/8, 1 3/16, 1 1/4	1/4 x 1/8
	1 5/16, 1 3/8	5/16 x 5/32
	1 7/16, 1 1/2, 1 5/8	3/8 x 3/16
	1 7/8	1/2 x 1/8*
8S	7/8 (Type 1)	3/16 x 3/32
	15/16, 1, 1 1/16, 1 1/8, 1 3/16, 1 1/4 (Type 1)	1/4 x 1/8
	1 5/16, 1 3/8 (Type 1)	5/16 x 5/32
	1 7/16, 1 1/2, 1 9/16, 1 5/8, 1 11/16, 1 3/4 (Type 1)	3/8 x 3/16
	1 7/8, 1 15/16, 2, 2 1/16, 2 1/8 (Type 1)	1/2 x 1/4
	2 1/8 (Type 1)	1/2 x 3/16*
2 3/8 (Type 2)	5/8 x 1/8*	
9S	15/16, 1, 1 1/16, 1 1/8, 1 1/4 (Type 1)	1/4 x 1/8
	1 3/8 (Type 1)	5/16 x 5/32
	1 7/16, 1 1/2, 1 9/16, 1 5/8, 1 11/16, 1 3/4 (Type 1)	3/8 x 3/16
	1 7/8, 1 15/16, 2, 2 1/16, 2 1/8, 2 3/16, 2 1/4 (Type 1)	1/2 x 1/4
	2 3/8, 2 1/2 (Type 1)	5/8 x 5/32
	2 7/8 (Type 2)	3/4 x 1/8*

Flange Size	Bore Range-inch	Keyseat-inch
10S	1 1/8, 1 1/4	1/4 x 1/8
	1 3/8	5/16 x 5/32
	1 7/16, 1 1/2, 1 9/16, 1 5/8, 1 11/16, 1 3/4	3/8 x 3/16
	1 7/8, 1 15/16, 2, 2 1/16, 2 1/8, 2 3/16, 2 1/4	1/2 x 1/4
	2 3/8, 2 7/16, 2 1/2, 2 5/8, 2 3/4	5/8 x 5/16
2 7/8, 3	3/4 x 1/4*	
11S	1 1/4 (Type 1)	1/4 x 1/8
	1 3/8 (Type 1)	5/16 x 5/32
	1 7/16, 1 1/2, 1 5/8, 1 3/4 (Type 1)	3/8 x 3/16
	1 7/8, 2, 2 1/16, 2 1/8, 2 1/4 (Type 1)	1/2 x 1/4
	2 3/8, 2 5/8, 2 3/4 (Type 1)	5/8 x 5/16
	2 7/8, 3 (Type 1)	3/4 x 3/8
	3 3/8 (Type 1)	7/8 x 7/16
	3 7/16 (Type 1)	7/8 x 3/16*
3 7/8 (Type 2)	1 x 1/4*	
12S	1 5/8, 1 3/4	3/8 x 3/16
	1 7/8, 2 1/16, 2 1/8	1/2 x 1/4
	2 3/8, 2 5/8, 2 3/4	5/8 x 5/16
	2 7/8	3/4 x 3/8
	3 3/8, 3 7/16, 3 5/8	7/8 x 7/16
3 7/8	1 x 1/2	
13S	2 1/8	1/2 x 1/4
	2 3/8	5/8 x 5/16
	2 7/8	3/4 x 3/8
	3 3/8, 3 7/16	7/8 x 7/16
3 15/16	1 x 1/2	
14S	2 7/8	3/4 x 3/8
	3 7/8	1 x 1/2

* Shallow Keyseat - Keystock supplied with coupling hub

Flange Size	Bore Range-mm	Keyseat-mm
5S	14, 15, 16	5 x 2.3
	19, 20	6 x 2.8
	24, 25, 28	8 x 3.3
6S	15	5 x 2.3
	19, 20	6 x 2.8
	24, 25, 28, 30	8 x 3.3
	32, 35, 38	10 x 3.3
7S	19	6 x 2.8
	24, 25, 28, 30	8 x 3.3
	32, 35, 38	10 x 3.3
	42	12 x 3.3
8S	24, 28, 30	8 x 3.3
	32, 38	10 x 3.3
	42	12 x 3.3
	45, 48	14 x 3.8
9S	24, 30	8 x 3.3
	32, 38	10 x 3.3
	42	12 x 3.3
	45, 48	14 x 3.8
10S	30	8 x 3.3
	32, 35, 38	10 x 3.3
	42	12 x 3.3
	45, 48, 50	14 x 3.8
	55	16 x 4.3
	60, 65	18 x 4.4
11S	38	10 x 3.3
	42	12 x 3.3
	45, 48	14 x 3.8
	52	16 x 4.3
	60	18 x 4.4
	70	20 x 4.9
	80	22 x 5.4
12S	50	14 x 3.8
	60, 65	18 x 4.4
	70	20 x 4.9
	80	22 x 5.4
	90	25 x 5.4

MD Flex Couplings Type B



Size	Bushing Required	Dimensions									Max Bore*	Wt. (lbs.)
		C1	C2	D	E	F	G	L	T	X		
6B	JA	1 7/16	1	4.000	15/32	2	7/8	3 3/8	25/32	1 3/32	1 1/4	1.4
7B	JA	1 5/8	1	4.625	15/32	2	1	3 1/2	25/32	1 5/16	1 1/4	1.9
8B	SH	1 29/32	1 1/4	5.450	9/16	2 11/16	1 1/8	4 1/16	29/32	1 1/2	1 5/8	2.9
9B	SD	2 1/4	1 13/16	6.350	5/8	3 3/16	1 7/16	4 3/4	1 1/32	1 3/4	1 15/16	4.8
10B	SK	1 15/16	1 7/8	7.500	23/32	3 7/8	1 5/8	5 1/2	1 7/32	2	2 1/2	7.8
11B	SF	2 3/16	2	8.625	11/16	4 5/8	1 7/8	6 1/4	1 1/2	2 3/8	2 15/16	12.0
12B	E	2 23/32	2 5/8	10.000	29/32	6	2 5/16	7 1/2	1 11/16	2 11/16	3 1/2	18.0
13B	F	3 3/4	3 5/8	11.750	1 1/16	6 5/8	2 11/16	8 3/4	1 31/32	3	3 15/16	31.2
14B	F	3 3/4	3 5/8	13.875	1 1/16	6 5/8	3 1/4	9 7/8	2 1/4	3 1/2	3 15/16	51.4

* Maximum bore with keyseat.

Element Characteristics

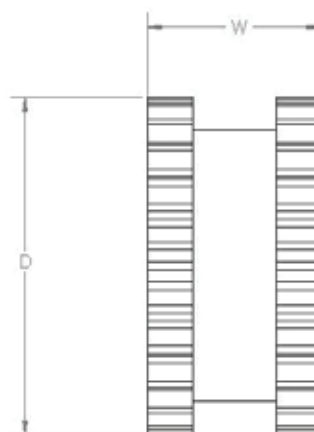
Shapes Available	EPDM	Neoprene	Hytrel
1pc, unsplit	JE	JN	H
1pc, split	JES	JNS	-
2pcs	E	N	HS
Typical Use	General Purpose	Oil Resist Non-flame	General Purpose
Rel. Rating	1X	1X	4X
Wind-Up Angular	15°	15°	7°
Misalignment	1°	1°	1/4°
Temperature (F)			
maximum	+272°	+200°	+250°
minimum	-30°	-0°	-65°

EPDM Elements

Dimensions

Part#	Coupling Size	D (Inches)	W (Inches)	Wt. (lbs.)
3JE	3	1 7/8	1	0.06
3JES	3	1 7/8	1	0.06
4JE	4	2 5/16	1 1/4	0.10
4JES	4	2 5/16	1 1/4	0.10
4E	4	2 5/16	1 1/4	0.10
5JE	5	2 15/16	1 9/16	0.20
5JES	5	2 15/16	1 9/16	0.20
5E	5	2 15/16	1 9/16	0.20
6JE	6	3 3/4	1 7/8	0.40
6JES	6	3 3/4	1 7/8	0.40
6E	6	3 3/4	1 7/8	0.40
7JE	7	4 11/32	2 3/16	0.62
7JES	7	4 11/32	2 3/16	0.62
7E	7	4 11/32	2 3/16	0.62
8JE	8	5 1/16	2 1/2	1.13
8JES	8	5 1/16	2 1/2	1.13
8E	8	5 1/16	2 1/2	1.13
9JE	9	6	3	1.46
9JES	9	6	3	1.46
9E	9	6	3	1.46

Part#	Coupling Size	D (Inches)	W (Inches)	Wt. (lbs.)
10JE	10	7 1/16	3 7/16	2.32
10JES	10	7 1/16	3 7/16	2.32
10E	10	7 1/16	3 7/16	2.32
11E	11	8 3/16	4	5.10
12E	12	9 9/16	4 11/16	8.10
13E	13	11 3/16	5 1/2	13.00
14E	14	13 3/32	6 1/2	21.10

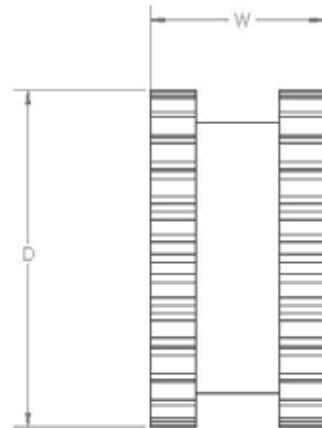


Coupling Ratings & Misalignment

Flange Size	EPDM Sleeves	Max. RPM	HP Per 100 RPM					Torque (in. lbs.)	Stiffness (in. lbs./rad)	Allow. Misalignment (inches)	
			Service Factor							Parallel	Angular
			1.0	1.5	2.0	2.5	3.0				
3	JE, JES	9200	0.1	0.07	0.05	0.04	0.03	60	229	0.010	0.035
4	E, JE, JES	7600	0.2	0.13	0.1	0.08	0.07	120	458	0.010	0.043
5	E, JE, JES	7600	0.5	0.33	0.25	0.2	0.17	240	916	0.015	0.056
6	E, JE, JES	6000	0.9	0.6	0.45	0.36	0.3	450	1718	0.015	0.070
7	E, JE, JES	5250	1.5	1	0.75	0.6	0.5	725	2769	0.020	0.081
8	E, JE, JES	4500	2.3	1.53	1.15	0.92	0.77	1135	4335	0.020	0.094
9	E, JE, JES	3750	3.7	2.47	1.85	1.48	1.23	1800	6875	0.025	0.109
10	E, JE, JES	3600	5.9	3.93	2.95	2.36	1.97	2875	10980	0.025	0.128
11	E	3600	9.3	6.2	4.65	3.72	3.1	5890	17300	0.032	0.151
12	E	2800	15	10	7.5	6	5	9360	27500	0.032	0.175
13	E	2400	23	15.33	11.5	9.2	7.67	14750	43350	0.040	0.195
14	E	2200	37	24.67	18.5	14.8	12.33	23400	68755	0.045	0.242

Neoprene Elements Dimensions

Part#	Coupling Size	D (Inches)	W (Inches)	Wt. (lbs.)
3JN	3	1 7/8	1	0.06
3JNS	3	1 7/8	1	0.06
4JN	4	2 5/16	1 1/4	0.10
4JNS	4	2 5/16	1 1/4	0.10
4N	4	2 5/16	1 1/4	0.10
5JN	5	2 15/16	1 9/16	0.20
5JNS	5	2 15/16	1 9/16	0.20
5N	5	2 15/16	1 9/16	0.20
6JN	6	3 3/4	1 7/8	0.40
6JNS	6	3 3/4	1 7/8	0.40
6N	6	3 3/4	1 7/8	0.40
7JN	7	4 11/32	2 3/16	0.62
7JNS	7	4 11/32	2 3/16	0.62
7N	7	4 11/32	2 3/16	0.62
8JN	8	5 1/16	2 1/2	1.13
8JNS	8	5 1/16	2 1/2	1.13
8N	8	5 1/16	2 1/2	1.13
9N	9	6	3	1.46
10N	10	7 1/16	3 7/16	2.32
11N	11	8 3/16	4	5.10
12N	12	9 9/16	4 11/16	8.10
13N	13	11 3/16	5 1/2	13.00
14N	14	13 3/32	6 1/2	21.10



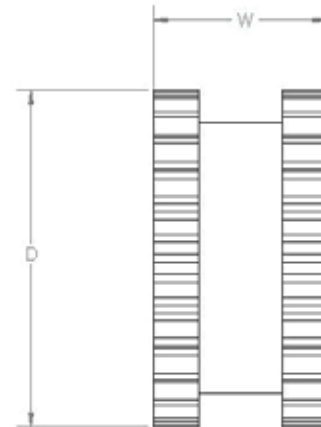
Coupling Ratings & Misalignment

Flange Size	Neoprene Sleeves	Max. RPM	HP Per 100 RPM					Torque (in. lbs.)	Stiffness (in. lbs./rad)	Allow. Misalignment (inches)	
			Service Factor							Parallel	Angular
			1.0	1.5	2.0	2.5	3.0				
3	JN, JNS	9200	0.1	0.07	0.05	0.04	0.03	60	229	0.010	0.035
4	N, JN, JNS	7600	0.2	0.13	0.1	0.08	0.07	120	458	0.010	0.043
5	N, JN, JNS	7600	0.4	0.27	0.2	0.16	0.13	240	916	0.015	0.056
6	N, JN, JNS	6000	0.7	0.47	0.35	0.28	0.23	450	1718	0.015	0.070
7	N, JN, JNS	5250	1.2	0.8	0.6	0.48	0.4	725	2769	0.020	0.081
8	N, JN, JNS	4500	1.8	1.2	0.9	0.72	0.6	1135	4335	0.020	0.094
9	N	3750	3.7	2.47	1.85	1.48	1.23	2340	6875	0.017	0.028
10	N	3600	5.9	3.93	2.95	2.36	1.97	3735	10980	0.020	0.032
11	N	3600	9.3	6.2	4.65	3.72	3.1	5890	17300	0.022	0.037
12	N	2800	15	10	7.5	6	5	9360	27500	0.025	0.042
13	N	2400	23	15.33	11.5	9.2	7.67	14750	43350	0.030	0.050
14	N	2200	37	24.67	18.5	14.8	12.33	23400	68755	0.035	0.060

Hytre Elements

Dimensions

Part#	Coupling Size	D (Inches)	W (Inches)	Wt. (lbs.)
6H	6	3 3/4	1 7/8	0.44
6HS	6	3 3/4	1 7/8	0.44
7H	7	4 11/32	2 3/16	0.69
7HS	7	4 11/32	2 3/16	0.69
8H	8	5 1/16	2 1/2	1.40
8HS	8	5 1/16	2 1/2	1.40
9H	9	6	3	1.80
9HS	9	6	3	1.80
10H	10	7 1/16	3 7/16	2.90
10HS	10	7 1/16	3 7/16	2.90
11H	11	8 3/16	4	4.50
11HS	11	8 3/16	4	4.50
12H	12	9 9/16	4 11/16	7.30
12HS	12	9 9/16	4 11/16	7.30
13HS	13	11 3/16	5 1/2	11.80
14HS	14	13 3/32	6 1/2	19.30



Coupling Ratings & Misalignment

Flange Size	Hytre Sleeves	Max. RPM	HP Per 100 RPM					Torque (in. lbs.)	Stiffness (in. lbs./rad)	Allow. Misalignment (inches)	
			Service Factor							Parallel	Angular
			1.0	1.5	2.0	2.5	3.0				
6	H, HS	6000	2.90	1.93	1.45	1.16	0.97	1800	10000	0.010	0.016
7	H, HS	5250	4.60	3.07	2.30	1.84	1.53	2875	20000	0.012	0.020
8	H, HS	4500	7.20	4.80	3.60	2.88	2.40	4530	30000	0.015	0.025
9	H, HS	3750	11.40	7.60	5.70	4.56	3.80	7200	47500	0.017	0.028
10	H, HS	3600	18.00	12.00	9.00	7.20	6.00	11350	100000	0.020	0.032
11	H, HS	3600	29.00	19.33	14.50	11.60	9.67	18000	125000	0.032	0.151
12	H, HS	2800	50.00	33.33	25.00	20.00	16.67	31500	225000	0.032	0.175
13	HS	2400	75.00	50.00	37.50	30.00	25.00	47268	368900	0.040	0.195
14	HS	2200	115.00	76.67	57.50	46.00	38.33	72480	593250	0.045	0.242